

## Summit Scripting Toolkit Technical Features

Looking to eliminate redundant processes and integrate systems using reliable, high functioning technology? Let Summit Healthcare help guide you through the technical process of evaluating task automation software that will allow you to connect to any system.

Struggling with MEDITECH 6.0 emulation or perhaps Windows scripting? Put the Summit Scripting Toolkit to the test! Find out why SST is the only tool on the market that can balance ease-of-use with high end performance and a robust feature set; making it a necessary part of your technology arsenal to achieve stable end user emulation and scripted interfacing.

### EASE OF USE

- **Command Builders** assist with the creation and use of every command throughout your script
- **Code Free Scripting** eliminates the need for syntax checking
- Convenient **Context Menus** throughout the product make finding the right command a simple task
- Workflows are organized into **Segments** which can be reused and shared in all your scripts using your Workflow Library

### CONNECTIVITY

- **Windows API integration** will deconstruct applications, enabling unbound Windows Scripting
- **Dedicated Text Streams** for Legacy and Proprietary systems including but not limited to:
  - Meditech Magic
  - Meditech Client Server
  - Meditech 6.0
  - McKesson Star
  - HLLAPI (Reflections, etc)
- Integration of several **OCR technologies** ensures readability options for any type of screen

- Connect to multiple applications simultaneously
- Each connected application is rendered in the Stream View, making workflow development simple

### DATA SOURCES

- Draw data directly from or write data back to spreadsheets, databases, and delimited files
- Data displays are user friendly and easy to work with
- Support for Access, SQL, and ODBC connections
- Connect to multiple data sources simultaneously

### .NET INTEGRATION

- Use the **Code Generator** to dynamically convert any SST workflow from XML to VB .NET or C# .NET
- Call on the K2 Engine libraries from your .NET project to create customer run-time scripting clients for seamless workflow integration and execution

### EXCEPTIONS AND TROUBLESHOOTING

- Choose from over one dozen IF commands to easily handle exceptions (i.e. If Found Window...)
- Create **rules based segments** designed to handle conditions that may change frequently
- Define **custom timeouts** at the engine, workflow, and segment level to capture unhandled exceptions efficiently

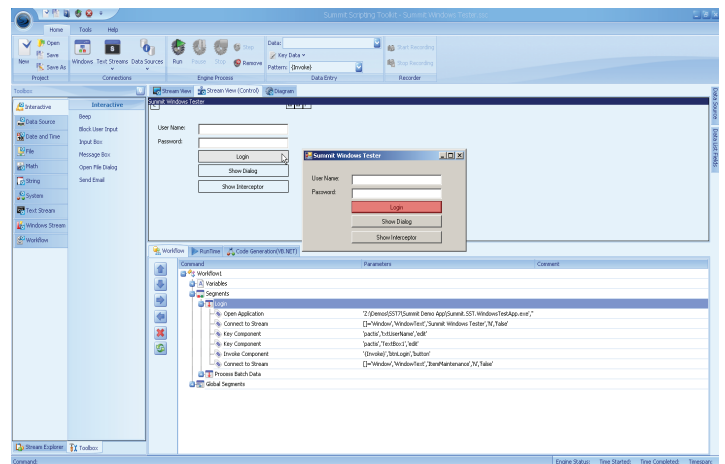
- Define **custom error handlers** at the workflow or segment level to handle general or timeout errors.
- Error handlers can be built to send emails, write to log files, or take other action

## RUNTIME AND SCHEDULING

- Use the K2 Runner as a lightweight runtime client for running SST workflows
- Create desktop shortcuts to launch workflows
- Launch a workflow when Windows starts
- Use the Summit Scheduler to dynamically trigger workflows and perform a variety of other actions

## TYPICAL HARDWARE CONFIGURATION

- Operating System: Microsoft Windows 2003, XP Pro, Vista Business, 2008
- Minimum Memory: 1 GB (2 GB recommended)
- Minimum Hard Disk Space: 30 MB (100 MB recommended)
- Minimum System Processor: Pentium or compatible 1.0 GHz (2GHz recommended) 32x or 64x bit
- Required Software: .NET Framework 3.5 (MS Office recommended)
- Minimum Resolution: 1024x768



### For More Information:

Summit Healthcare  
35 Braintree Hill Park, Suite 303  
Braintree, MA 02184  
Phone: 781-519-4840  
Fax: 801-720-9545  
[www.summit-healthcare.com](http://www.summit-healthcare.com)